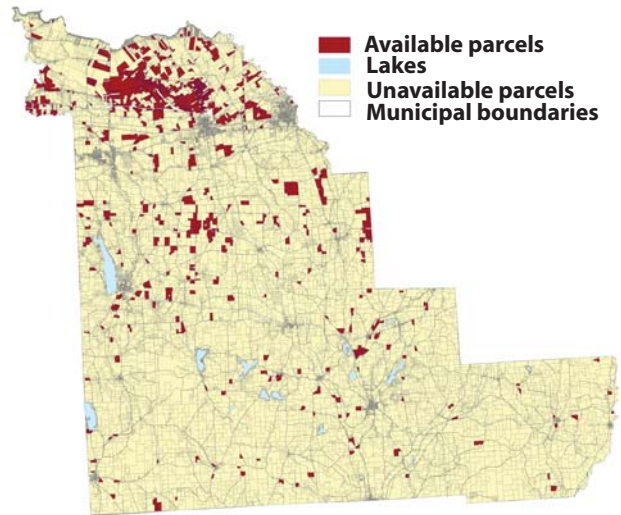


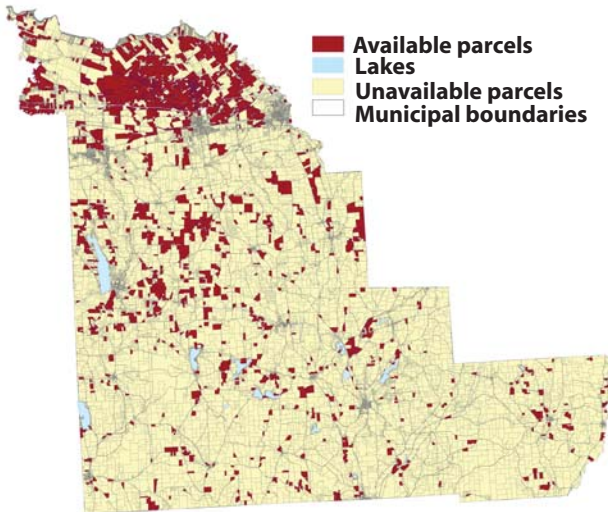
Madison County Land Inventory

What does this mean for Madison County?

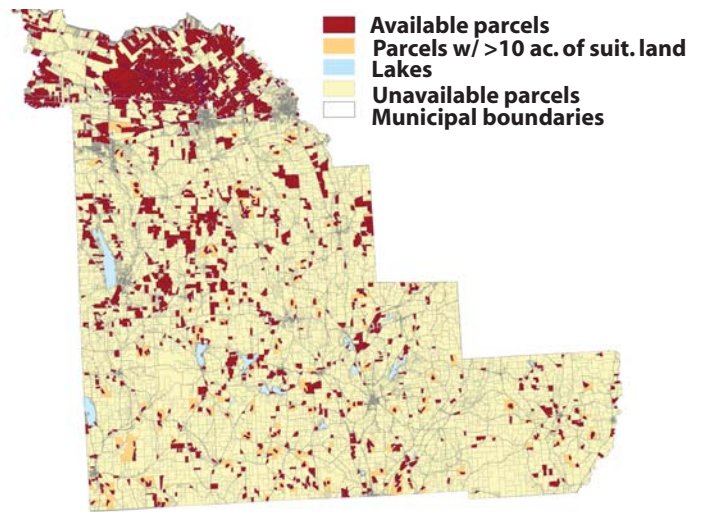
The total yields for the various scenarios, after considering land cover, range from 231,680 oven-dried tons per year (odt/yr) to 951,502 odt/yr (Figure 3). This opens up a lot of potential opportunities for Madison County. On the low-yield, low-acreage end, the county could provide enough biomass for a 35 MW Combined Heat and Power (CHP) facility; at the medium-yield, high-acreage end, Madison County alone could supply all of the existing and planned CHP and biofuel plants with biomass. This information is valuable when looking at potential large-scale biomass developments as well as smaller-scale opportunities for individual buildings and campuses.



Scenario 1: Potential willow production on suitable parcels classified as marginal agricultural land



Scenario 2: Potential willow production on suitable parcels of marginal agricultural, residential or vacant



Scenario 3: Potential willow production on available parcels with a minimum of 10 acres of suitable land

Scenario	Open Land Cover			Open + % Forest Land Cover		
	Total Available (Acres)	Low Yield (odt yr ⁻¹)	Medium Yield (odt yr ⁻¹)	Total Available (Acres)	Low Yield (odt yr ⁻¹)	Medium Yield (odt yr ⁻¹)
1-Avail. Agric.	13,898	231,680	386,225	18,275	304,644	507,862
2-All Available	25,717	428,702	714,675	32,740	545,776	909,845
3-All Avail. + Suit. Land > 10ac	26,809	446,906	745,022	34,239	570,761	951,502

Figure 3: Summary of Yield Scenarios